

ZP2



β -actin

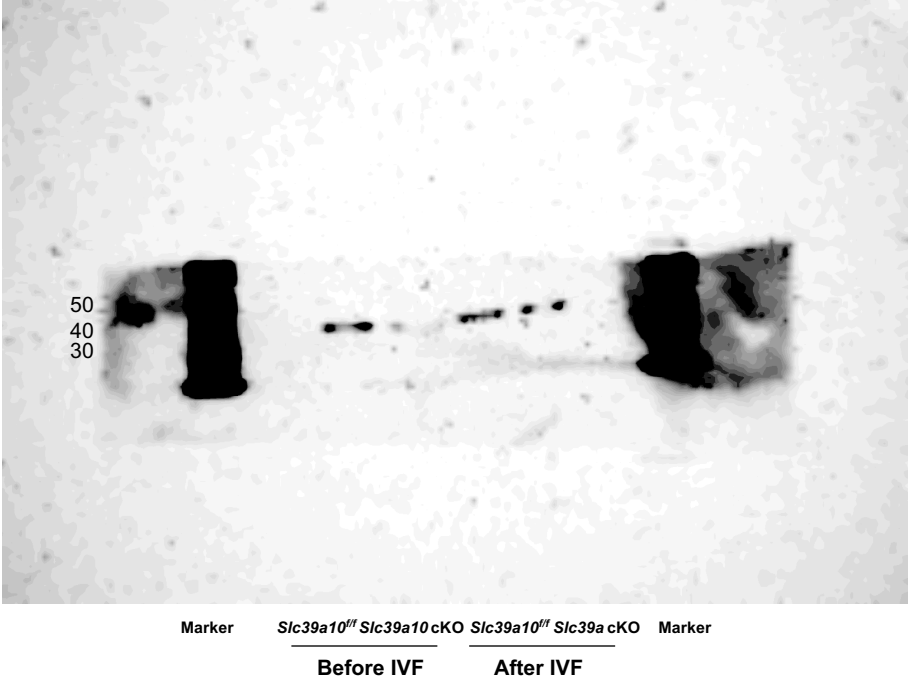


Figure 4-Source data 1. Original membranes corresponding to Figure 4D. Biotinylated Protein Ladder Detection Pack (#7727; Cell Signaling Technology) were employed as molecular weight marker. After blocking in WB, one membrane was cleaved at the 50-80 kDa position, with the upper membrane reacted with ZP antibody and the lower membrane reacted with β -actin antibody.